



A shepherd wearing a wide-brimmed hat and a dark jacket is leading a flock of sheep in a field. The shepherd is holding a staff and looking down at the sheep. The sheep are white and woolly, and they are following the shepherd. The background is a hazy, open field.

What's A Leader to Do?

(Hebrews 13:17)

The Whole Nine Yards, No. 9

The Whole Nine Yards

A faded background image of a shepherd wearing a hat and a dark coat, holding a staff, leading a flock of sheep across a field.

**1. Loving One
Another**

**2. Loving
Outsiders**

3. Loving Sufferers

**4. Honoring
Marriage**

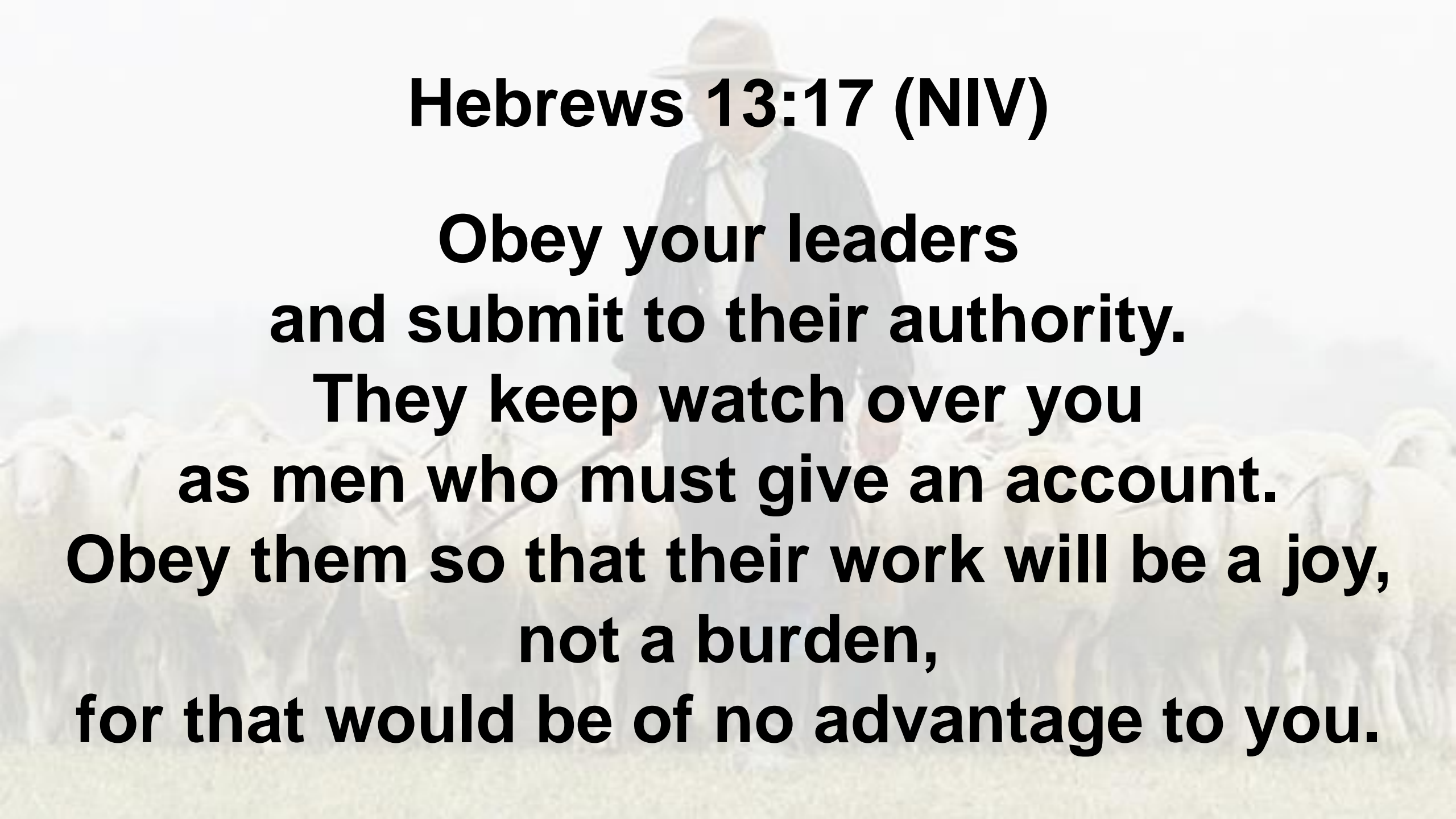
5. Contentment

**6. Clinging to
Jesus**

7. Worship

8. Leadership

9. Prayer

A shepherd wearing a wide-brimmed hat and a dark suit jacket is walking through a field of sheep. The sheep are white and appear to be grazing or moving in a line. The background is a soft-focus landscape with hills under a bright sky.

Hebrews 13:17 (NIV)

**Obey your leaders
and submit to their authority.**

**They keep watch over you
as men who must give an account.**

**Obey them so that their work will be a joy,
not a burden,
for that would be of no advantage to you.**

A shepherd wearing a wide-brimmed hat and a dark jacket is herding a flock of sheep in a field. The scene is slightly hazy, and the text is overlaid in the center.

Authority
Responsibility
Accountability





A shepherd wearing a wide-brimmed hat and a dark jacket is herding a flock of sheep in a field. The scene is slightly hazy, and the text is overlaid in the center.

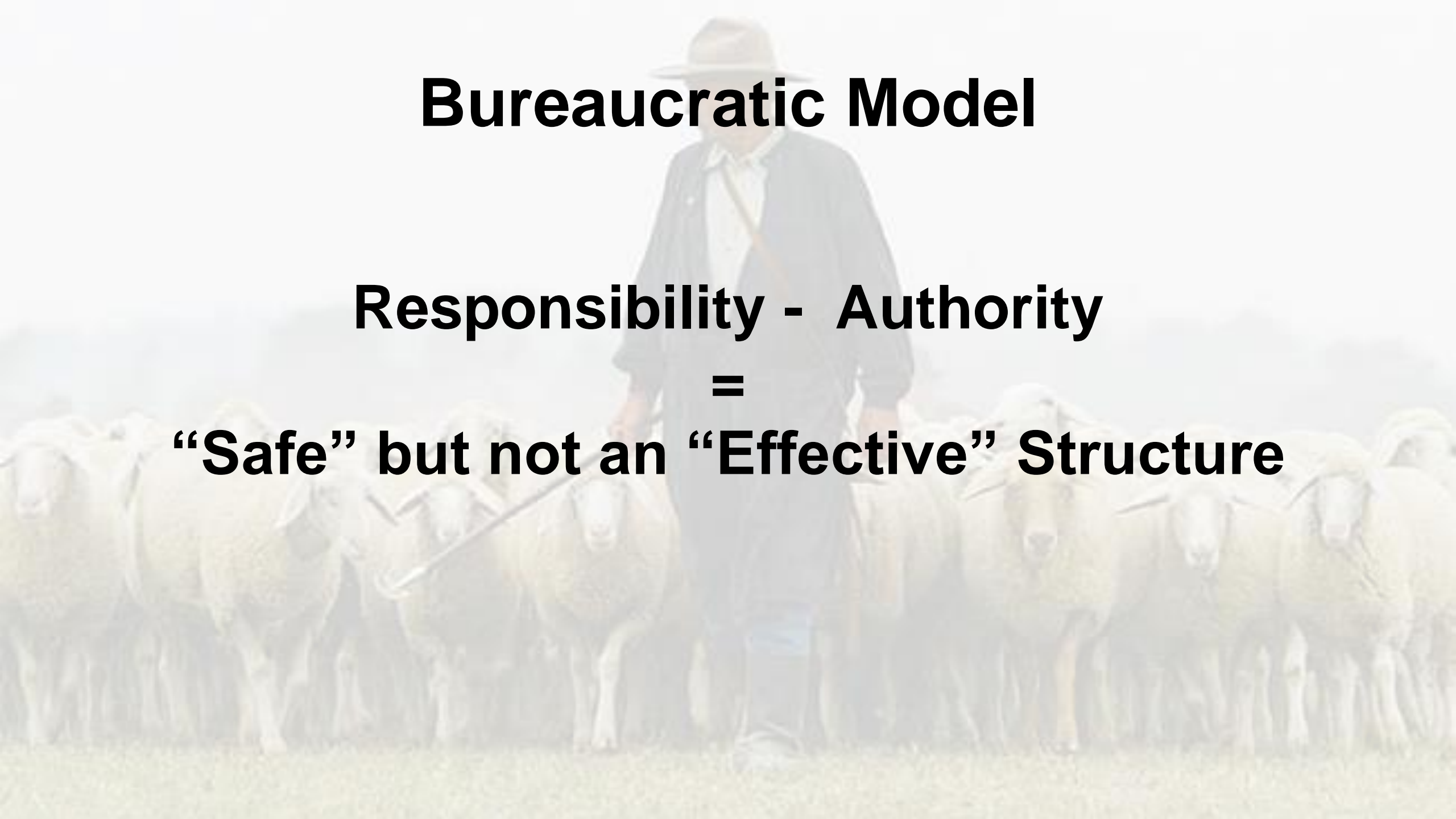
Authority
Responsibility
Accountability

Bureaucratic Model

Responsibility - Authority

=

“Safe” but not an “Effective” Structure



Authoritarian Model

A shepherd wearing a wide-brimmed hat and a dark jacket is herding a flock of sheep in a field. The shepherd is holding a long staff and is positioned in the center of the frame, with the sheep surrounding him. The background is a hazy, open landscape.

Responsibility + Authority

=

“Effective” but not a “Safe” Structure



"All power tends to corrupt and absolute power corrupts absolutely."

~Lord Acton

A shepherd wearing a wide-brimmed hat and a dark jacket is herding a flock of sheep in a grassy field. The shepherd is positioned in the center, facing forward, with the sheep surrounding him. The background is a soft-focus landscape with trees and a bright sky.

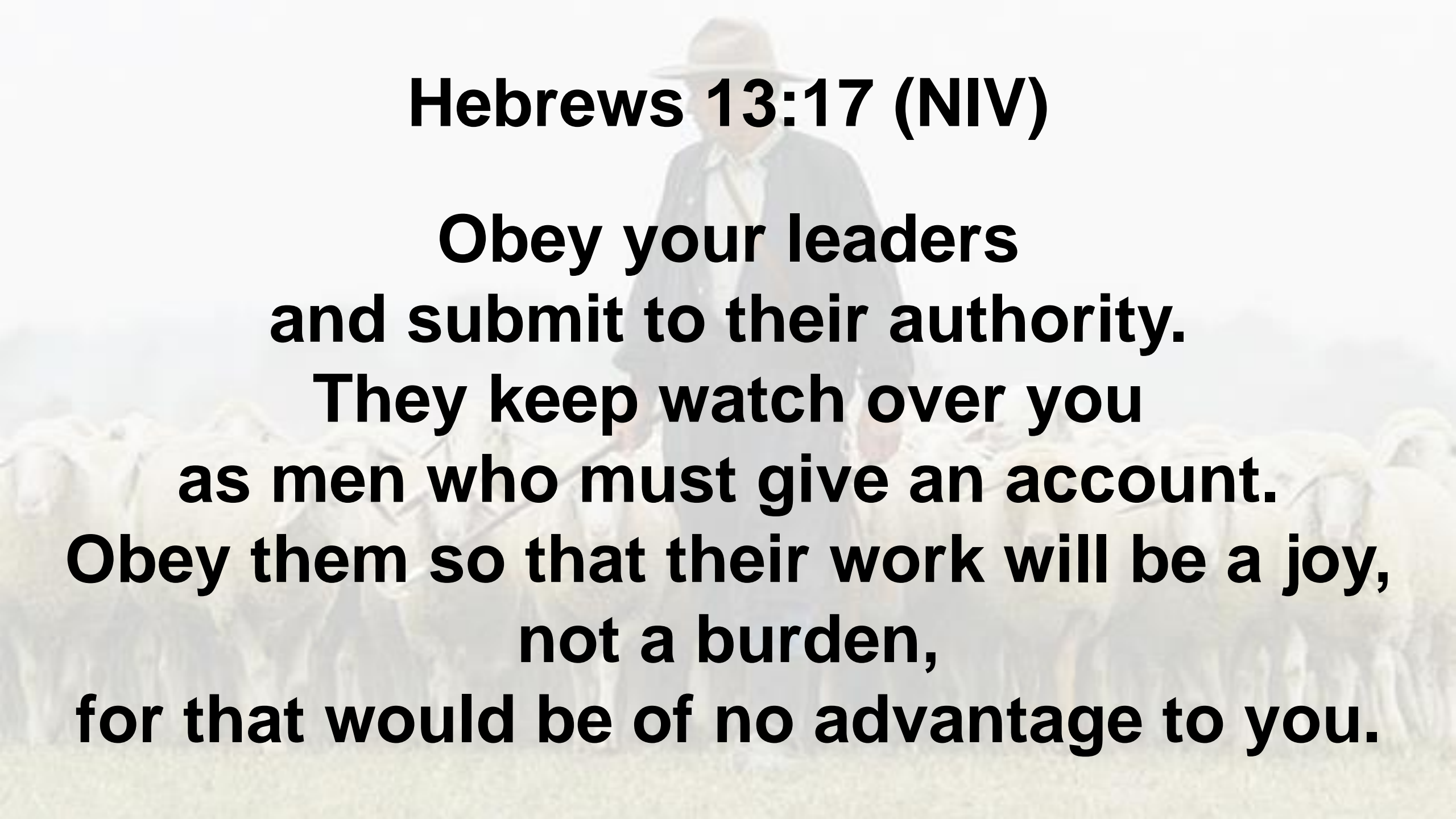
Leadership Model

**Responsibility + Authority
+ Accountability**

=

“Safe” and “Effective” Structure



A shepherd wearing a wide-brimmed hat and a dark suit jacket over a light-colored shirt and tie, walking through a field of sheep. The sheep are white and some are wearing collars. The background is a hazy, open landscape.

Hebrews 13:17 (NIV)

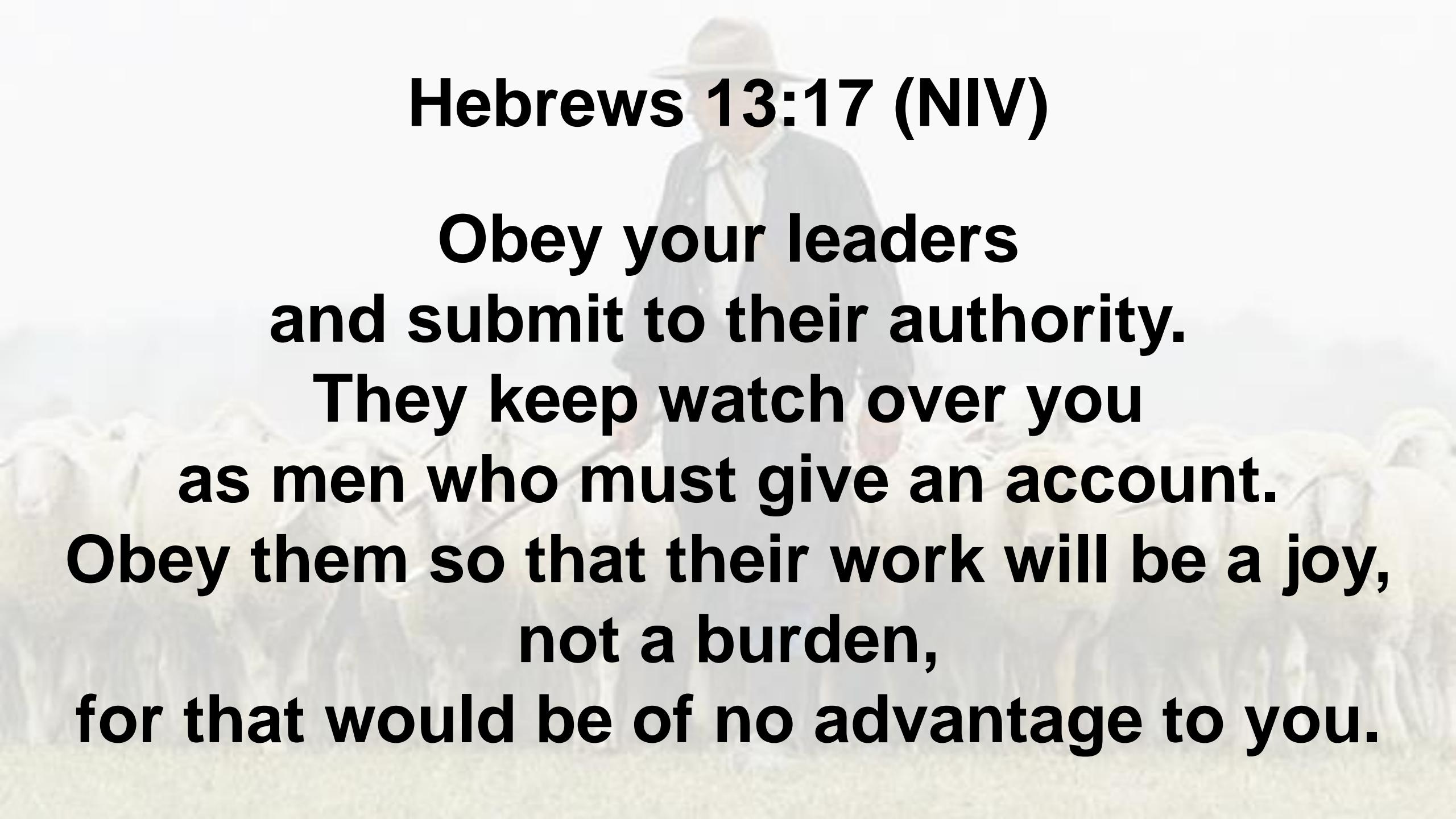
**Obey your leaders
and submit to their authority.**

**They keep watch over you
as men who must give an account.**

**Obey them so that their work will be a joy,
not a burden,
for that would be of no advantage to you.**

A shepherd wearing a wide-brimmed hat and a dark jacket is walking through a flock of sheep in a field. The scene is slightly hazy, giving it a soft, ethereal quality. The sheep are white and woolly, and the shepherd is positioned in the center of the frame, looking down at them.

**God cares for his people
by giving leaders
who watch over them.**

A shepherd wearing a wide-brimmed hat and a dark suit jacket is walking through a field of sheep. The sheep are white and appear to be grazing or moving in a line. The background is a soft, hazy landscape with rolling hills under a bright sky.

Hebrews 13:17 (NIV)

**Obey your leaders
and submit to their authority.**

**They keep watch over you
as men who must give an account.**

**Obey them so that their work will be a joy,
not a burden,
for that would be of no advantage to you.**

Be a Pastor they said



It'll be fun they said

Action Points

A shepherd in a dark jacket and light shirt is herding a flock of sheep in a field. The shepherd is holding a long staff and is looking towards the sheep. The sheep are white and are standing in a line. The background is a hazy, open field.

1. Bathe the pastoral search process in prayer.

2.

3.


Action Points

A faded background image of a shepherd in a dark jacket and light shirt, holding a long staff, leading a flock of sheep across a grassy field. The scene is misty or overcast.

- 1. Bathe the pastoral search process in prayer.**
- 2. Examine the nature of your concern.**
- 3.**

A shepherd wearing a wide-brimmed hat and a dark jacket is herding a flock of sheep in a field. The scene is slightly hazy, and the text is overlaid on the image.

**“Did you see me waving in the back of the
worship center?
You preached too long.
It was time to eat!”**

A shepherd wearing a wide-brimmed hat and a dark jacket stands in a field, holding a long staff. He is surrounded by a large flock of sheep. The scene is slightly hazy, suggesting a misty or overcast day. The text is overlaid on the shepherd's figure.

**“Your sermon needed
more calories.”**

A shepherd wearing a wide-brimmed hat and a dark jacket is herding a flock of sheep in a field. The shepherd is holding a long staff and is looking down at the sheep. The sheep are white and woolly, and they are standing in a line. The background is a hazy, open field.

“We need to start attracting more normal people at church.”

A shepherd wearing a wide-brimmed hat and a dark jacket is herding a flock of sheep in a field. The shepherd is holding a long staff and is looking down at the sheep. The sheep are white and woolly, and they are standing in a line. The background is a hazy, open field.

“Not enough people signed up for the church golf tournament. You have poor leadership skills.”

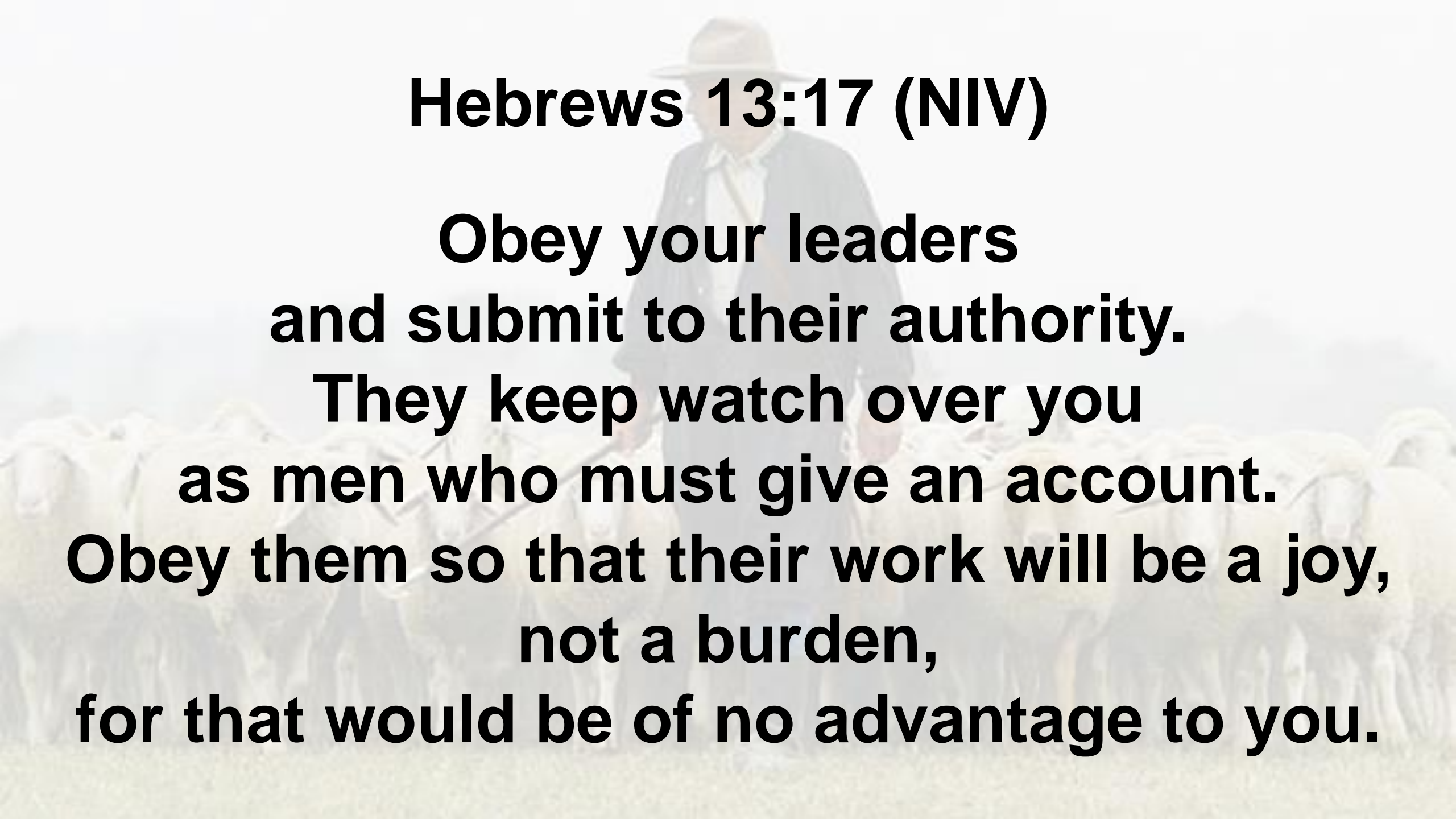
A shepherd wearing a wide-brimmed hat and a dark jacket is herding a flock of sheep in a field. The scene is slightly hazy, and the sheep are arranged in a line, looking towards the camera. The shepherd is holding a long staff or stick.

“Our expensive coffee is attracting too many hipsters.”

Action Points



- 1. Bathe the pastoral search process in prayer.**
- 2. Examine the nature of your concern.**
- 3. Be prepared to follow the leadership of a new pastor.**

A shepherd wearing a wide-brimmed hat and a dark suit jacket is walking through a field of sheep. The scene is slightly blurred, suggesting a focus on the text overlaid on the image.

Hebrews 13:17 (NIV)

**Obey your leaders
and submit to their authority.**

**They keep watch over you
as men who must give an account.**

**Obey them so that their work will be a joy,
not a burden,
for that would be of no advantage to you.**